

# DECK THE HALLS

Berks Bucks & Oxon Flowers  
Christmas Flower Festival



*26-27 November 2022*

*Sat: 10am-5pm*

*Sun: 10am-4pm*

Entry by Donation

Just Giving



Cash/Cheque

Credit/Debit Card

*Falkland Islands Memorial Chapel  
Pangbourne College*

Refreshments available  
Silent auction of some exhibits  
Childrens Quiz

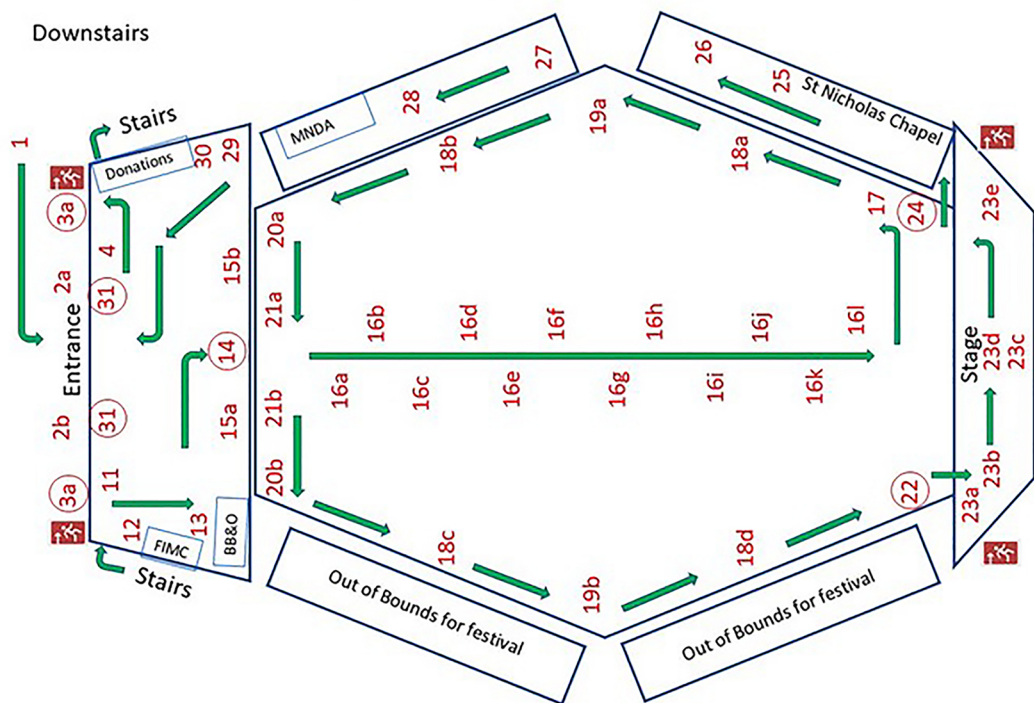
Proceeds to:

Falkland Islands Memorial Chapel Trust  
and

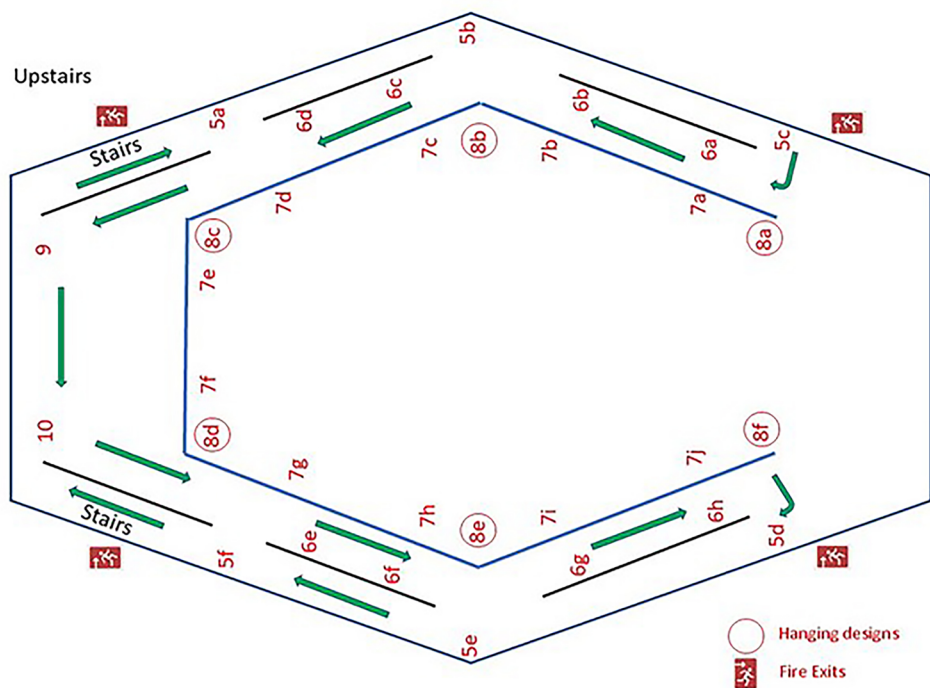
Motor Neurone Disease Association Reading & West Berkshire Branch

Follow the route marked 

Downstairs



Upstairs



 Hanging designs  
 Fire Exits

**1 Sleigh Ride**

Sally Hardy, Festival Designer

**2 Have Yourself a Merry Little Christmas**

Chris Pearce, Jane Murphy and Anne Wright, Abingdon Flower Club

**3 O Come All Ye Faithful**

Pattie Wallington, Marcia Chapman, Christine Smith and Diana Tappin  
Gerrards Cross Flower Club

**4 All I want for Christmas**

Shirley Sexton, Festival Designer

**5 Angels from the Realms of Glory**

**5a** Judy Precious and Anne Douglas, High Wycombe Flower Club

**5b** Julie Druce and Emma Thurlow, Caversham & Chiltern Flower Club

**5c** Carol Doughty

**5d** Caroline Golding, Sandhurst & Crowthorne Flower Club

**5e** Tracy Ray, Pearl Stephenson and Mary Winnett

Twyford and Ruscombe Floral Art Club

**5f** Sherry Smith and Pat Hannam, Bourne End Flower Arrangement Society

**6 'Twas the Night before Christmas**

**6a** Members of Bicester Floral Club led by Lorraine Hicks

**6b** Members of Bicester Floral Club led by Jackie Page

**6c** Val Truby, Aylesbury Flower Club

**6d** Janice Matthews, Aylesbury Flower Club

**6e** Cathrine Twitchett, Thame Flower Club

**6f** Pat Collinson, Thame Flower Club

**6g** Karen Dilley, Sandhurst & Crowthorne Flower Club

**6h** Sue Owens, Sandhurst & Crowthorne Flower Club

**7 Joy to the World**

**7a** Caroline Clarke, Ann Davidson and Pat Johnston, Four Ends Flower Club

**7b** Melanie Dean, Aylesbury Flower Club

**7c** Sue Bubb, Aylesbury Flower Club

**7d** Lesley Henderson, Thames Valley Flower Club

**7e** Kath Charlton and Joan Strong, Earley Flower Club

**7f** Kath Charlton and Joan Strong, Earley Flower Club

**7g** Elizabeth Gidman, NAFAS National Associate of Honour

- 7h Sue Davenport, Wokingham Flower Club
- 7i Sue Davenport, Wokingham Flower Club
- 7j Caroline Clarke, Ann Davidson and Pat Johnston, Four Ends Flower Club

**8 We Wish You a Merry Christmas**

- 8a Jayne King, Club 2000
- 8b Jayne King, Club 2000
- 8c Marion Ayris & Lynda Ayris, Club 2000
- 8d Jackie Page & Dawn Duggan, Club 2000
- 8e Lorraine Saunders & Donna Williams, Club 2000
- 8f Ann Mc Devitt & Jane Melville, Club 2000

**9 Chestnuts Roasting by an Open Fire**

Woodley Flower Club

**10 God Rest Ye Merry Gentlemen**

Woodley Flower Club

**11 Frosty the Snowman**

June Hawkins and Christine Kift, Booker Flower Club

**12 Rudolph the Red-Nosed Reindeer**

Jane Murphy, Anne Wright and Chris Pearce, Abingdon Flower Club

**13 Santa Claus is Coming to Town**

Sally Ballard, Royal Windsor Rose Show Floral Club

**14 It came upon a Midnight Clear**

- 14a Moon: Ninon Linnell, Bladon & Woodstock Flower Club
- 14b Stars: Anthony Frankland and others, Bladon & Woodstock Flower Club

**15 Winter Wonderland**

- 15a Kim Wright and Lynn Moran, Old Windsor Flower Club
- 15b Linda Dove, Stephanie Cornell, Dusty Taylor, Sandra Nicholson, Gillie Edwards, Ilene Iles and Joyce Rawlinson  
Bramley & Romans Flower Club



## **16 The Twelve Days of Christmas**

All designs by members of Greys Flora

<b>16a</b>	A Partridge in a Pear Tree:	Angela Edmonds
<b>16b</b>	Two Turtle Doves:	Jane Haas
<b>16c</b>	Three French Hens:	Christine Harlow
<b>16d</b>	Four Calling Birds:	Jane Belcher
<b>16e</b>	Five Gold Rings:	Irene Manson
<b>16f</b>	Six Geese a Laying:	Brenda Copas
<b>16g</b>	Seven Swans a Swimming:	Margaret Woodley
<b>16h</b>	Eight Maids a Milking:	Carol Bennett
<b>16i</b>	Nine Ladies Dancing:	Irene Manson
<b>16j</b>	Ten Lords a Leaping:	Jane Belcher
<b>16k</b>	Eleven Pipers Piping:	Sara Steward
<b>16l</b>	Twelve Drummers Drumming:	Lil Ryder

## **17 Ding Dong Merrily on High**

Alison Mount, Festival Designer and Area President

## **18 Rocking Around the Christmas Tree**

All these contemporary trees produced by Phoenix Design.

Lead designers: Fiona Blacklock and Pera Dean

Assisted by: Pat Dibben, Suzanne Marshall, Helen Temple and others

## **19 Silent Night**

**19a** Carole Dorward

**19b** Lynn Bower

## **20 Oh Tannenbaum**

Trees donated by Yattendon Estates Ltd, RG8 OUT, Tel: 01635 203901

**20a** Val Sweet, Mona van Der Knaap, Beverley Petts and other members  
Holyport Flower Club

**20b** Catherine Penny and Anne Turner, Sonning Flower Club

## **21 I Saw Three Ships**

21a and 21b by Newbury Floral Society

Margaret Coleman, Mary Fairbairn, Judy Wilson, Liz Bennett and Sarah Shillito

## **22 In the Bleak Midwinter**

Rosemary McGowan, Area Past President

**23 It's the Most Wonderful Time of the Year**

**23a** Barbara Hunt and Gillian Harries, Newbury Floral Society

**23b** Irene Manson, NAFAS National Associate of Honour

**23c** Lorraine Saunders, Jane Melville and other members, Design Scents

**23d** Jane Haas, Area Chairman

**23e** Frances Buchan, Enyth Smart, Jackie Nichols and Penny Nichol  
Oxford Flower Club

**24 Follow that Star**

Lucy Foster, Old Windsor Flower Club

**25 Away in a Manger**

Finchampstead Flower Club

**26 The Stars are Shining Bright and Clear**

Sadie Clare and Sue Hollebhone

Falkland Islands Memorial Chapel Flower Guild

**27 The First Noel**

Audrey Mainwaring, Chalgrove Flower Club

**28 We Three Kings**

Mavis Jennings and Monica Trigg, Chalfont Flower Club

**29 See Amid the Winter's Snow**

Anna Steven, Area Past President

**30 Do You Hear What I Hear?**

Alison Broadbridge and Jean Wykes, Caversham & Chiltern Flower Club

**31 I'm Dreaming of a White Christmas**

Bracknell Flower Club

**Festival Committee**

Chairman: Jane Haas

Designers: Shirley Sexton, Alison Mount, Sally Hardy

Treasurer: Alison Vacher

Publicity: Carole Dorward, Tracy Ray

Refreshments and Stewarding: Frances Buchan, Brenda Milton

# Berks Bucks & Oxon Flowers

Our flower clubs belong to the BB&O Area of NAFAS, the National Association of Flower Arrangement Societies. This is a network of 21 geographic areas across the United Kingdom, comprising approximately 850 clubs with 29000 members. NAFAS is affiliated to the Royal Horticultural Society and the World Association of Flower Arrangers. NAFAS Registered Charity Number 1101348

The BB&O Area works within NAFAS to

- Encourage the love of flowers and plants to demonstrate their decorative and creative value
- Advance education of flower arranging
- Instruct, train and accredit judges, demonstrators, speakers and teachers
- Support worthy causes and charities by organising exhibitions, competitions and flower festivals
- Encourage the conservation of rare and endangered species of plants and flowers.

Within our geographic area we organise demonstrations, workshops, fun events, competitive shows and festivals. We actively participate in national shows, festivals and exhibitions.

Email



[secretary@bbandoflowers.org.uk](mailto:secretary@bbandoflowers.org.uk)

[media@bbandoflowers.org.uk](mailto:media@bbandoflowers.org.uk)

Website



[bbandoflowers.org.uk](http://bbandoflowers.org.uk)

Facebook



[bbandoflowers](https://www.facebook.com/bbandoflowers)

Twitter



[bbandoflowers](https://twitter.com/bbandoflowers)

Pinterest



[bbandoflowers](https://www.pinterest.com/bbandoflowers)



# Deck the Halls Charitable Donations

Proceeds from this flower festival will be shared between the following charities:

**Falkland Islands Memorial Chapel Trust** which is responsible for the maintenance of the chapel which commemorates the servicemen who fought and died in the 1982 Falklands War. 2022 marks the 40th anniversary of this war. Registered Charity No 1037942. [falklands-chapel.org.uk](http://falklands-chapel.org.uk)

**Motor Neurone Disease Association: Reading and West Berkshire Branch** which supports local families affected by this devastating disease for which there is currently no cure. 2022 marks the 35th anniversary of this branch. Registered Charity No 294354. [mndrwb.org](http://mndrwb.org)

Please donate by one of the following means:

\* Scan this QR code or visit  
[justgiving.com/team/deck-the-halls-flower-festival](https://justgiving.com/team/deck-the-halls-flower-festival)  
to donate via JustGiving (with Gift Aid option)



- \* Pop cash or cheques (payable to BB&O Area of NAFAS) into the post-box (design 4).
- \* Pop charity Gift Aid envelopes containing cash/cheque into the post-box (design 4).
- \* Go to desk near design 30 to donate via credit/debit card.

**Toilets** are located in the school building opposite the Chapel

**Refreshments** are available in the College Cafe - turn left on leaving the Chapel